



CONTRACTOR/STORAGE BUILDING WITH OFFICE

202 S. Taylor Street, Pleasant Hill, Missouri



SALE PRICE: \$195,000 | 4,400 SF ON 11,250 SF LOT

DEMOGRAPHICS

	1 mile	3 miles	5 miles
Estimated Population	2,887	10,279	12,842
Avg. Household Income	\$82,639	\$112,093	\$118,691

- Small contractor/storage building with office and loft area
- Convenient Downtown Pleasant Hill location
- Three overhead doors
- Easy access to 7 Highway



CLICK HERE TO VIEW MORE
LISTING INFORMATION

For More Information Contact:

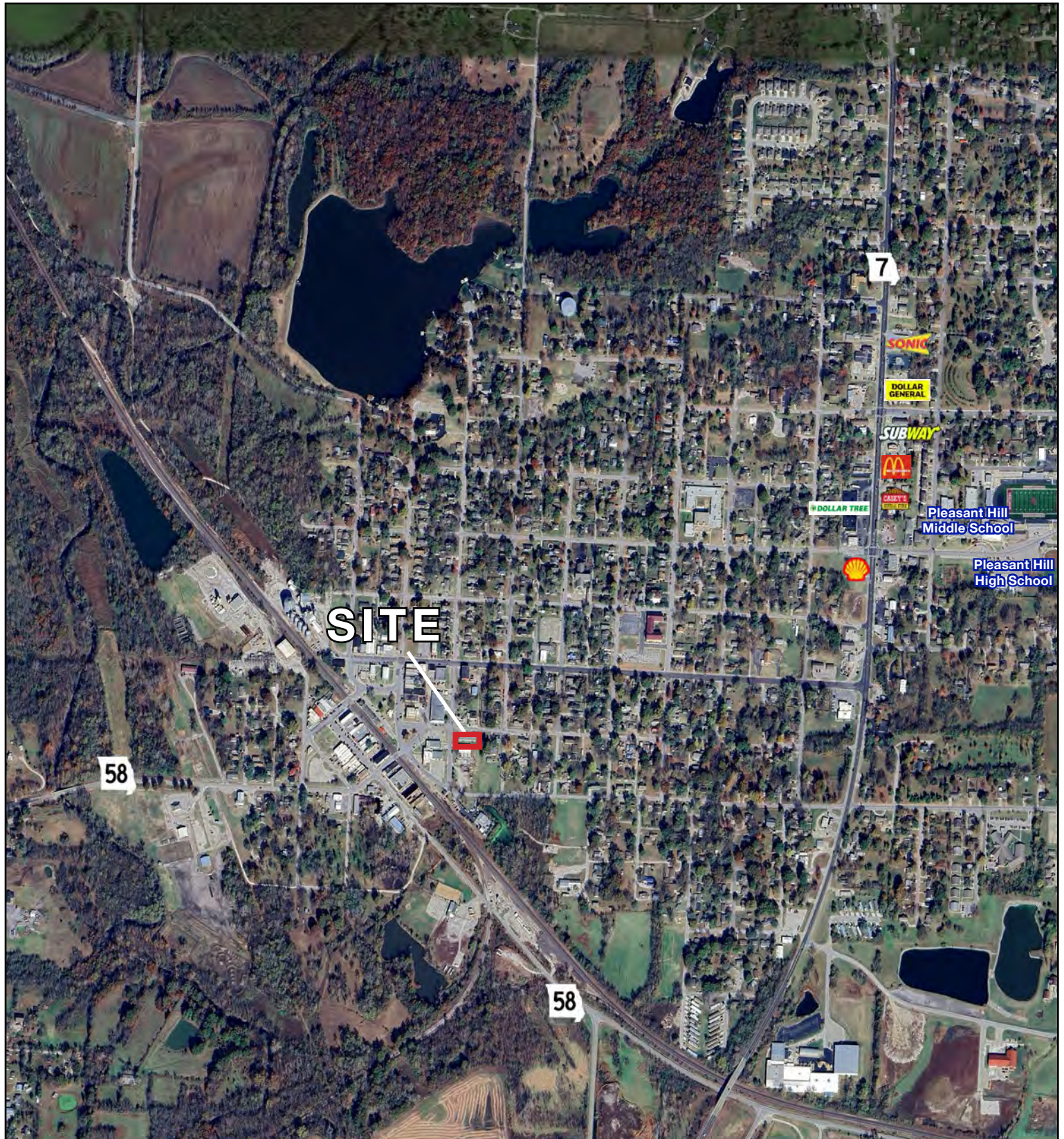
BOB JAEKEL | 816.412.7365 | bjaekel@blockandco.com

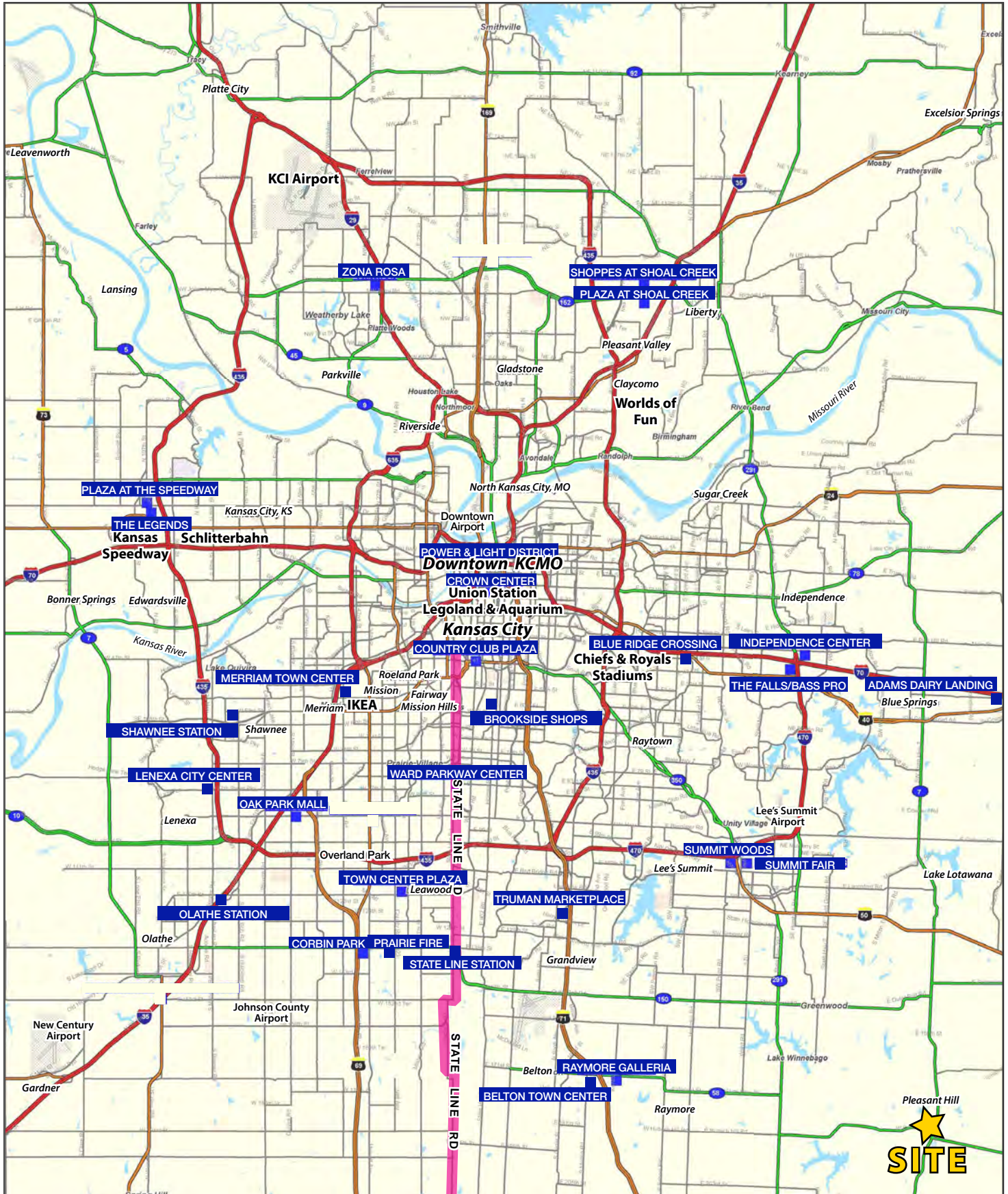
Exclusive Agent

AERIAL



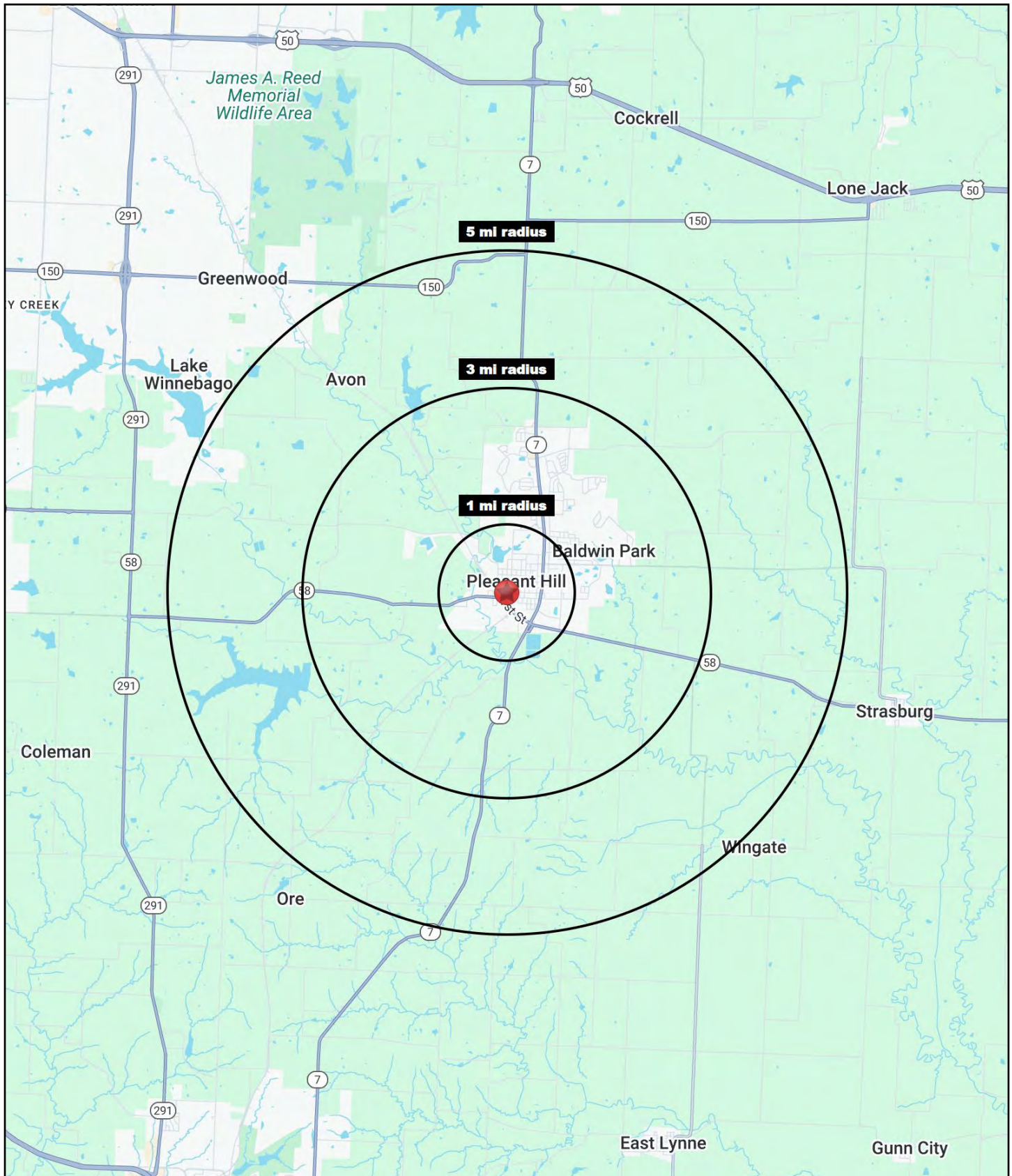
AERIAL





CONTRACTOR/STORAGE BUILDING WITH OFFICE

202 S. Taylor Street, Pleasant Hill, Missouri





CONTRACTOR/STORAGE BUILDING WITH OFFICE

202 S. Taylor Street, Pleasant Hill, Missouri

202 S. Taylor Street Pleasant Hill, MO 64080	1 mi radius	3 mi radius	5 mi radius
Population			
2024 Estimated Population	2,887	10,279	12,842
2029 Projected Population	3,004	10,810	13,651
2020 Census Population	2,769	9,958	12,444
2010 Census Population	2,683	9,227	11,443
Projected Annual Growth 2024 to 2029	0.8%	1.0%	1.3%
Historical Annual Growth 2010 to 2024	0.5%	0.8%	0.9%
2024 Median Age	35.6	37.7	38.9
Households			
2024 Estimated Households	1,172	3,923	4,876
2029 Projected Households	1,226	4,132	5,188
2020 Census Households	1,067	3,701	4,616
2010 Census Households	1,008	3,386	4,199
Projected Annual Growth 2024 to 2029	0.9%	1.1%	1.3%
Historical Annual Growth 2010 to 2024	1.2%	1.1%	1.2%
Race and Ethnicity			
2024 Estimated White	91.4%	92.7%	92.7%
2024 Estimated Black or African American	1.1%	1.2%	1.3%
2024 Estimated Asian or Pacific Islander	0.7%	0.5%	0.6%
2024 Estimated American Indian or Native Alaskan	0.4%	0.3%	0.3%
2024 Estimated Other Races	6.5%	5.3%	5.2%
2024 Estimated Hispanic	6.0%	4.5%	4.2%
Income			
2024 Estimated Average Household Income	\$82,639	\$112,093	\$118,691
2024 Estimated Median Household Income	\$57,313	\$98,072	\$103,759
2024 Estimated Per Capita Income	\$33,602	\$42,813	\$45,097
Education (Age 25+)			
2024 Estimated Elementary (Grade Level 0 to 8)	2.2%	1.2%	1.1%
2024 Estimated Some High School (Grade Level 9 to 11)	3.8%	3.0%	2.8%
2024 Estimated High School Graduate	40.0%	34.8%	33.8%
2024 Estimated Some College	30.5%	25.5%	24.8%
2024 Estimated Associates Degree Only	6.3%	7.3%	7.6%
2024 Estimated Bachelors Degree Only	7.6%	16.3%	18.1%
2024 Estimated Graduate Degree	9.4%	12.0%	11.8%
Business			
2024 Estimated Total Businesses	111	273	297
2024 Estimated Total Employees	868	1,878	2,013
2024 Estimated Employee Population per Business	7.8	6.9	6.8
2024 Estimated Residential Population per Business	26.1	37.7	43.2

©2025, Sites USA, Chandler, Arizona, 480-491-1112 Demographic Source: Applied Geographic Solutions 11/2024, TIGER Geography - RS1